

BMC Discovery

Discover your assets and their relationships in just 15 minutes with up to 100% accuracy

PRODUCT DESCRIPTION

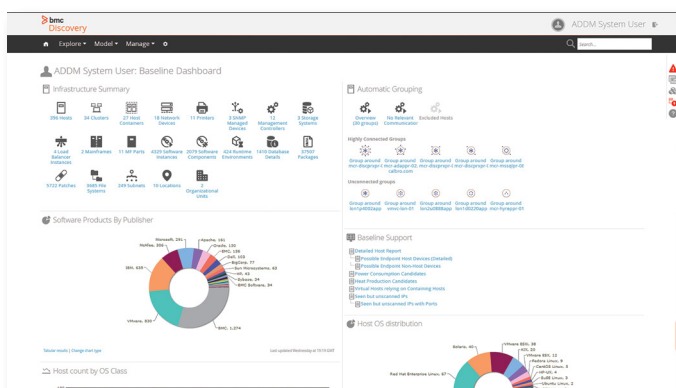
BMC Discovery (formerly BMC Atrium Discovery and Dependency Mapping, or ADDM) creates a dynamic, holistic view of all data center assets and the relationships between them, giving IT crucial visibility into how the assets support the business. Each scan delves into the information and dependencies for all software, hardware, network, storage, and versions, providing IT with the context needed to create an application map from any piece of information about it. **A lightweight footprint allows IT to map applications with up to 100% accuracy in 15 minutes or less.**

BUSINESS CHALLENGE

Maintaining data center asset and dependency information is a challenge. **Application mapping hinges on precise asset accountability; without it, data center decisions are based on best effort.** IT can't consolidate, prioritize fixes, perform audits, and know what assets support which part of the business purely through speculation. Application discovery and dependency mapping are interrelated and should come from a single, trusted solution.

BMC SOLUTION

BMC Discovery automates asset discovery and dependency mapping to better gain visibility into management of digital services as part of the **BMC Digital Enterprise Management** approach to digital transformation. **In minutes, IT can link infrastructure and software to how it impacts the business** to optimize capacity, ensure stronger security, and improve service, change, and problem management.



Digital Enterprise Management



KEY FEATURES

BMC Discovery is much more than a data center asset discovery solution.

- **Start-anywhere application mapping** – start mapping an application from any piece of information about it
- **3,500+ data center assets covered** – broadest data center asset coverage ensures that every component in your data center is discovered
- **3 clicks to insight** – single point of entry into all components of the IT infrastructure with an index search engine

KEY BENEFITS

- **A five-year average ROI of 470%** for BMC Discovery customers, with a **payback period of only 8 months**, was found in a 2016 IDC report¹
- **Security Operations** can perform essential prevention and detection, including locating servers that could be back door entry points, quickly identifying applications affected by a breach, and running a quick scan for OpenSSL
- **Planning for cloud** is made simpler with easy identification of assets and their dependencies to improve decisions on which assets to move to the cloud and which assets to retire

- ◀ **Baseline dashboard** provides insightful overview and drill-down access into discovered software and hardware components.

PRODUCT DETAILS

Agentless, lightweight, and scalable: BMC Discovery is a ready-to-run virtual appliance. Deployment takes minutes; there is no installation process to run through, no external database to install and configure, and no specific configuration and operating system requirements to satisfy. This allows you to get up and running very quickly with minimal effort to maintain it. While in operation, organizations can scan multiple times per day, depending on the need to maintain accuracy. BMC Discovery offers nearly limitless scale through adequate architecture options, in terms of scan speed (e.g. 100,000 servers per day), size of the data stored, and speed to access information.

Security: BMC Discovery is proven to be secure using standard security certifications, including **Common Criteria EAL2**. The virtual appliance has been hardened and complies with **NIST STIG** and supports **FIPS 140-2** encryption standards. The application offers granularity in configuring access rights, encryption, and depth of discovery actions.

Configuration management database (CMDB) integration: BMC Discovery offers seamless integration into BMC Remedy CMDB with out-of-the box, continuous data synchronization. The integration can be configured so filters and rules are applied to the data prior to the load. In addition, BMC Discovery offers web services and database integrations that can be used to synchronize the data with other CMDB technologies.

Extended Data Pack (optional add-on): The software end-of-life reference library provides dates for end of life, end of support, and end of extended support for common operating systems and software. This add-on can help quickly identify unsupported software, better plan for upgrades, and avoid upgrading software that is no longer supported. The hardware reference library provides vendor specifications for hardware power and thermal ratings. This information identifies inefficient hardware.

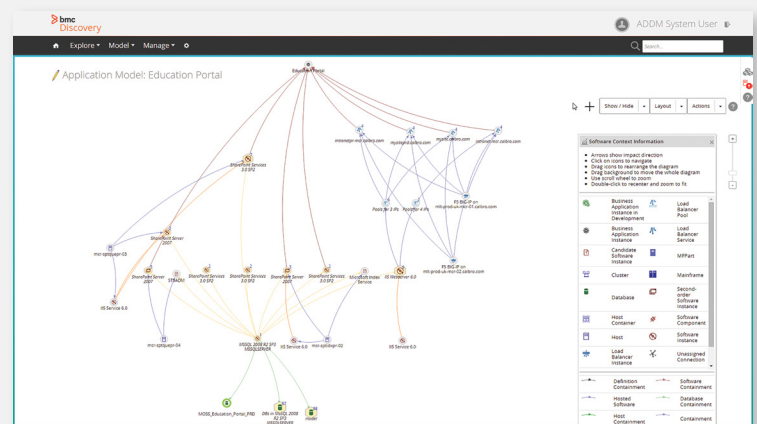
Discovery for Storage (optional add-on): This content pack enables storage components from 25 virtual and physical storage brands to be included in ITSM processes, enabling storage management teams to focus on more strategic work within their discipline.

1 IDC Research, Inc., expected February 2016.

FOR MORE INFORMATION

To learn more about BMC Atrium Discovery, please visit bmc.com/discovery

➤ Application mapping studio leverages discovered relationships to quickly map infrastructure components to business services.



BMC is a global leader in innovative software solutions that enable businesses to transform into digital enterprises for the ultimate competitive advantage. Our Digital Enterprise Management solutions are designed to make digital business fast, seamless, and optimized from mainframe to mobile to cloud and beyond.

BMC – Bring IT to Life

BMC digital IT transforms 82% of the Fortune 500®.



BMC, BMC Software, the BMC logo, and the BMC Software logo, and all other BMC Software product and service names are owned by BMC Software, Inc. and are registered or pending registration in the US Patent and Trademark Office or in the trademark offices of other countries. All other trademarks belong to their respective companies. © Copyright 2016 BMC Software, Inc.

