



Ericom Connect[®]

Using Any Application, On Any Device, Anywhere

Whether you require workforce mobility, extreme scalability or an easy, out-of-the-box connection broker, Ericom Connect offers it all — in one secure, robust access management solution that is easy to deploy and use.

IT JUST WORKS!

Ericom Connect takes enterprise-grade managed access, mobility and data security to new heights. Enjoy ease of use along with powerful reporting tools to monitor and track app, user and system performance. Supporting up to 100,000 concurrent users per access management server, Connect allows you to start out as small as you want, and scale gradually and predictably to keep pace with today's strategic initiatives.

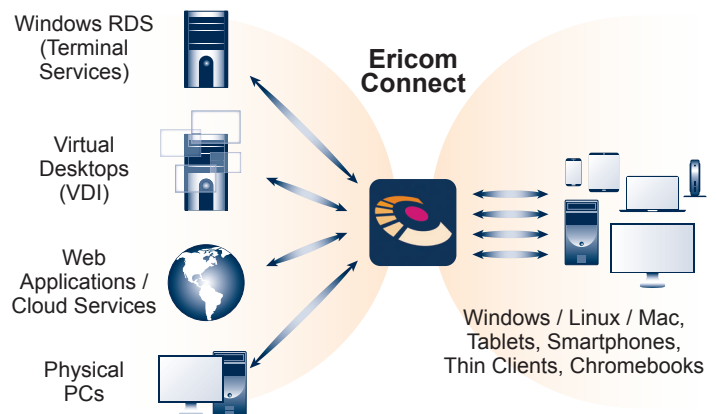
With over two decades of expertise in the access market, Ericom is a committed vendor who can tailor Connect to your specific access needs and scope.

WHY ERICOM CONNECT[®]?

Elastic Grid Architecture. Ericom Connect's highly available, super-scalable and robust architecture allows enterprises to scale and manage applications effectively, while supporting up to thousands of hosting servers and hundreds of thousands of user sessions.

Multi Data-Center Support. Enterprises can effectively distribute their access infrastructures across multiple data center locations, while ensuring accessibility, reliability and business continuity.

Cloud-Ready. With multi-tenancy support, services providers can offer managed and unmanaged access solutions such as Desktops as a Service (DaaS) while enterprises can manage isolated environments based on Line of Business (LOB), geography, and more.



Ericom has been named "A Major Player" in the 'IDC MarketScape: Worldwide Virtual Client Computing Software 2015 Vendor Assessment' (June 2015).

Powerful Reporting & Business Insight. Dozens of built-in reports provides a holistic view of system resources, users and session activity. This makes it extremely easy to track and optimize application and desktop usage, monitor user productivity, measure system workload and health, and troubleshoot connectivity issues/errors.

100% Web-based Administration. With its tenfold management-capacity over other solutions, Connect's easy-to-use, unified Web-based console, lets you centrally deploy, manage and monitor an enormous amount of resources and users from a single interface, without requiring IT staff to deploy, configure, and maintain a client-based admin tool.

THE FLAVORS OF ERICOM CONNECT

Ericom Connect Enterprise

For organizations with 1000+ users who need a flexible, highly scalable solution.

Ericom Connect Professional

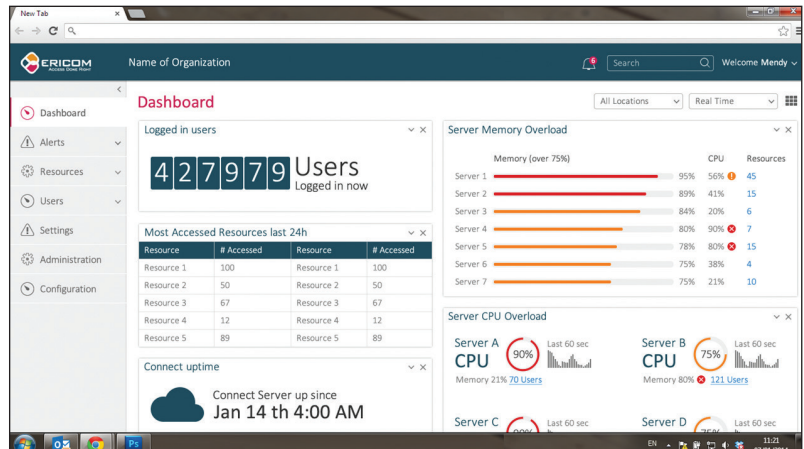
For small to medium-sized organizations with less than 1000 users.

REAL BENEFITS!

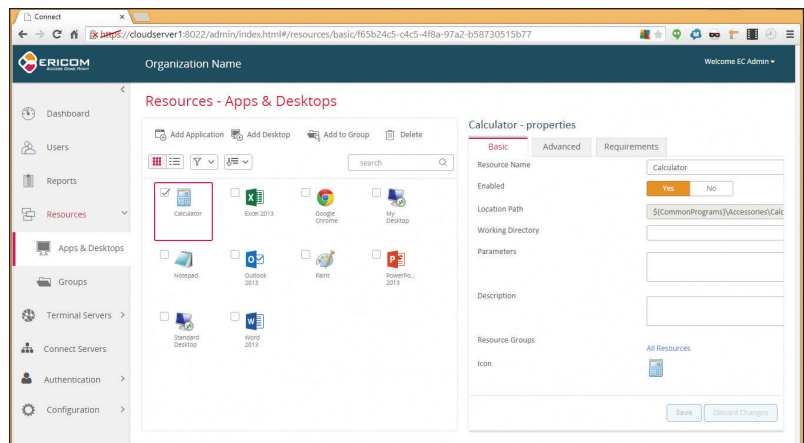
- **Rapidly deploy virtualized applications & desktops** — in hours, not days!
- **Significantly Reduce IT & Helpdesk workload.** Connect requires no end-user installations, plug-ins or patches, thus lowering IT complexity and workload
- **Great user-experience.** Enjoy easy HTML5 browser-based access to applications, desktops & data
- **Turn IT from a cost center into an operational data goldmine.** Leverage a wealth of IT operational data via powerful reporting and proactive troubleshooting
- **Ensure business & workforce continuity.** Robust, always-on, clientless access mitigates business disruptions and improves workforce productivity
- **Flexibly addresses a wide for a variety of business needs.** Secure browsing for ensuring data protection, remote desktop management and desktop as a service, BYOD access and cloud migration

“Ericom Connect... The whole thing just feels really intuitive. You can create groups of applications, groups of servers, and groups of users that you then manage as a group. So you can associate a group of apps with AD items and apply groups to hosts.”

— Brian Madden, Virtualization Expert



Get an immediate, high level view of the health of your system



Configure, customize and view all published applications, desktops and documents



North & South America

Ericom Software Inc.
231 Herbert Avenue
Closter, NJ 07624 USA
T +1 (201) 767 2210
F +1 (201) 767 2205
Toll-free 1 (888) 769 7876
E-mail info@ericom.com

UK & Western Europe

Ericom Software (UK) Ltd.
11a Victoria Square
Droitwich, Worcestershire
WR9 8DE United Kingdom
T + 44 (0) 1905 777970
E-mail info@ericom.co.uk

Rest of World

Ericom Software Ltd.
8 Hamarpeh Street
Har Hotzvim Technology Park
Jerusalem 9777408 Israel
T + 972 (2) 591 1700
F + 972 (2) 571 4737
E-mail info@ericom.com